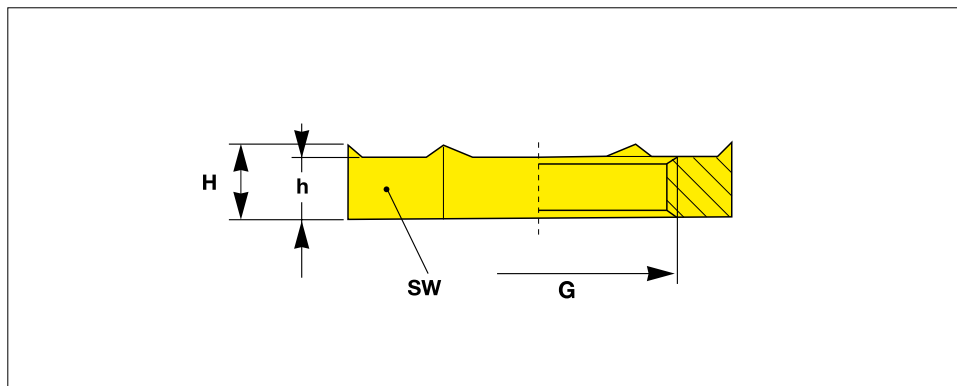


Quick-Fit® EMC Locknuts, Brass, Nickel plated

With cutting edges. To secure tightening of EMC-Cable Glands, to cut through paint or powder coatings ensuring optimal contact for equipotential bonding, increased vibration stability

prompt
MADE-TO-ORDER
VOLUME



All dimensions in mm

Material :
Brass,
nickel plated

With cutting edges. To secure tightening of EMC-Cable Glands, to cut through paint or powder coatings ensuring optimal contact for equipotential bonding, increased vibration stability.

Think Plastic. Go Protec.®



Connecting thread	Internal height	Height	Spanner size	Reference-No.
G	h	H	SW	
M 12 × 1.5	2.8	3.5	15	EPN 715 / M 12 × 1.5
M 16 × 1.5	2.8	3.5	19	EPN 715 / M 16 × 1.5
M 20 × 1.5	3.0	3.7	24	EPN 715 / M 20 × 1.5
M 25 × 1.5	3.5	4.2	30	EPN 715 / M 25 × 1.5
M 32 × 1.5	4.0	4.7	36	EPN 715 / M 32 × 1.5
M 40 × 1.5	5.0	6.0	46	EPN 715 / M 40 × 1.5
M 50 × 1.5	5.0	6.0	60	EPN 715 / M 50 × 1.5
M 63 × 1.5	6.0	7.0	70	EPN 715 / M 63 × 1.5

Should your requirements not be shown please ask for a separate quotation. PROTEC products and specifications are subject to improvement and change without notice.

Quick-Fit® EMC Locknuts, Brass, Nickel plated

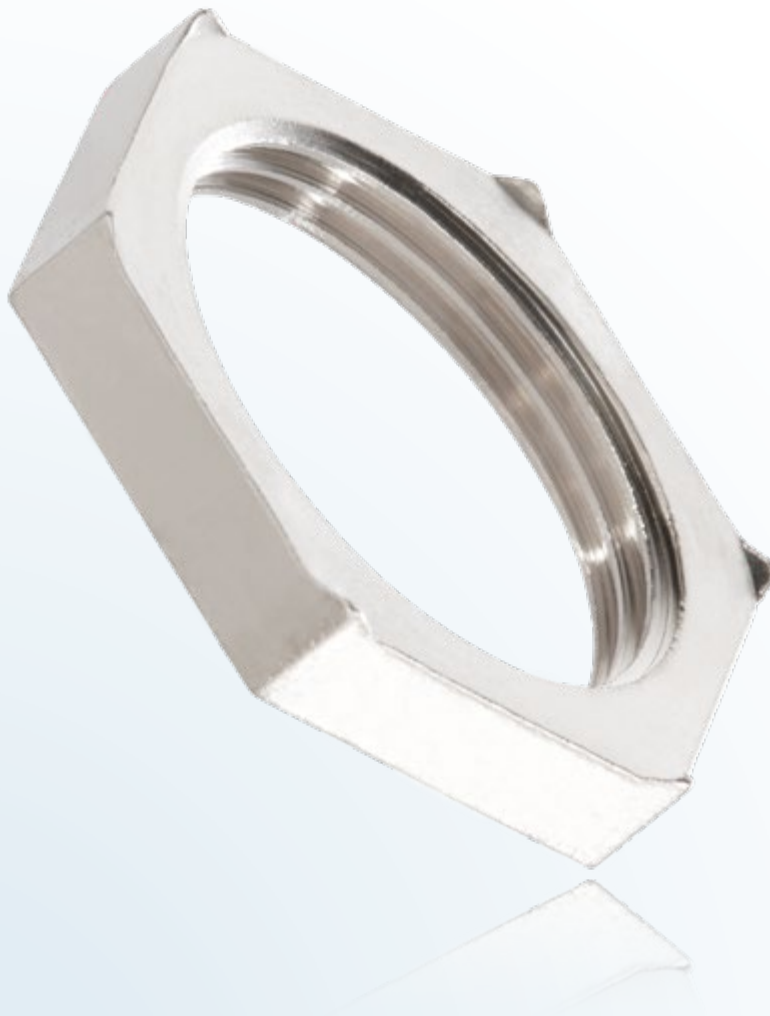
With cutting edges. To secure tightening of EMC-Cable Glands, to cut through paint or powder coatings ensuring optimal contact for equipotential bonding, increased vibration stability

TRIPLE ADVANTAGE of PROTEC QUICK-FIT®

QUALITY. To secure tightening of EMC-cable glands these EMC / EMI hexagon shaped locknuts with cutting edges provide best possible shield contact. Manufactured in nickel plated brass these specially designed lock-nuts cut through protective powder coatings ensuring optimal contact for equipotential bonding, increased vibration resistance.

AVAILABILITY. With over 400 million moulded components shipped from our UK logistics center we provide the fastest on time delivery service to all industries of the UK market.

PHILOSOPHY. The highest degree of Protec Quick-Fit functionality and safety at the best price in the market.



Material :
Brass,
nickel plated

Individual Productions :
On request we develop and produce individually tailored solutions next to the standard items of this range: additional dimensions, different materials and new colours

We would be pleased to advise you.

Think Plastic. Go Protec.®

PROTEC
PLASTICS